

**COMMON EQUIPMENT IN THE LABORATORY**  
 (MORE AT [HTTP://GREENSLIME.INFO/DATA/LAB\\_EQUIP2/LABEQUIP.HTM](http://GREENSLIME.INFO/DATA/LAB_EQUIP2/LABEQUIP.HTM))



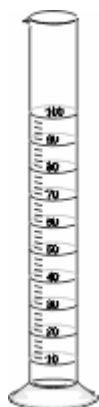
beakers



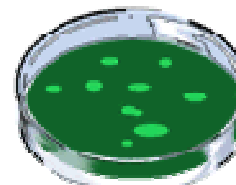
Erlenmeyer  
Flask



test  
tube



graduated  
cylinder



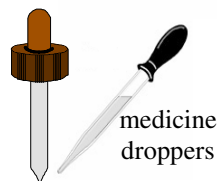
Petri dish



watch  
glass



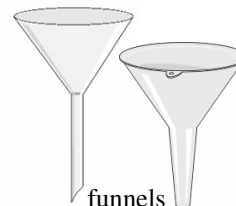
thermometer



medicine  
droppers



scoopula



funnels



transfer pipettes



Test tube brush



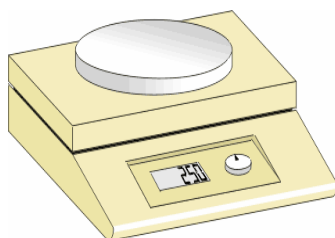
Mortar and  
pestle



magnifying  
glass



compound  
microscope



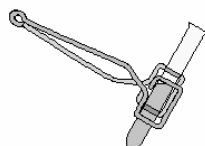
electronic scale



test-tube holder



crucible tongs



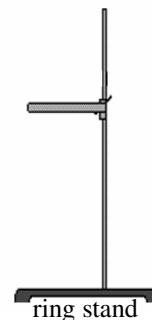
test-tube and  
test-tube holder



Bunsen  
burner

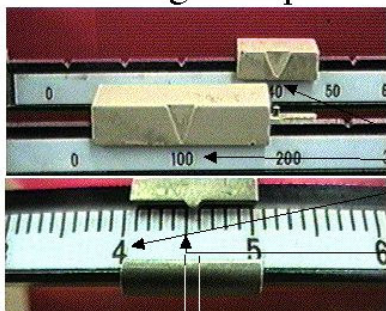


Proper  
techniques for  
using a Bunsen  
burner to heat a  
test-tube in the  
test-tube holder



ring stand

**Reading a Triple Beam Balance  
An Example**



The uppermost photo shows the larger riders on a triple beam balance, while the lower photo is a close-up of the smallest rider. The reading on this balance is:

**144.55 g**

This digit is an estimate. It is determined by dividing the smallest division on the balance into 10 imaginary units and then estimating where the pointer rests.

Triple Beam Balance

*Lab Equipment Information on the Internet:*

- [library.thinkquest.org/10429/low/lab/lab.htm](http://library.thinkquest.org/10429/low/lab/lab.htm)
- [www.chem.hope.edu/labescape/labdrwr/labequip.htm](http://www.chem.hope.edu/labescape/labdrwr/labequip.htm)